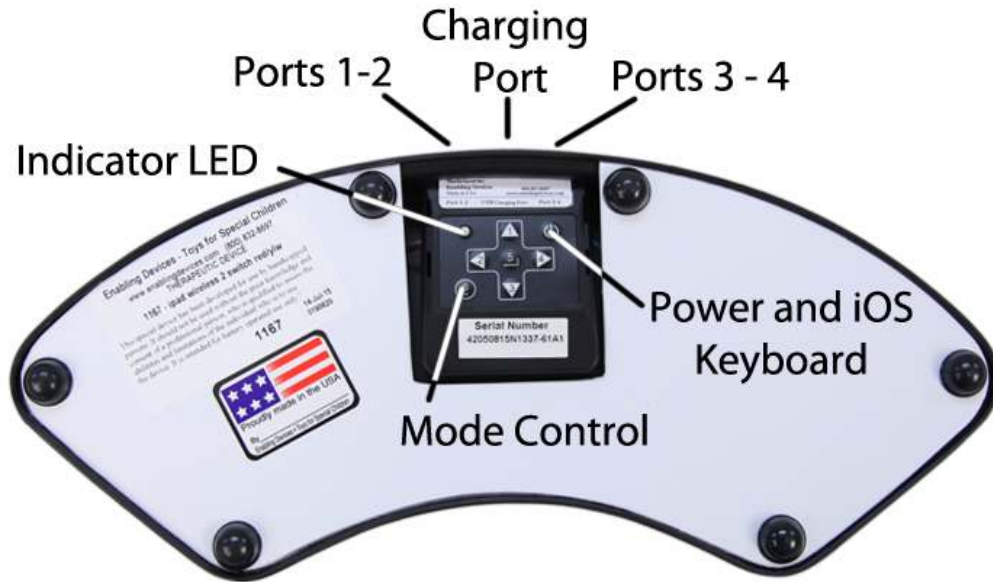


IPad Wireless Two Switch #1167



USER'S GUIDE



50 Broadway
Hawthorne, NY 10532
Tel. 914.747.3070 / Fax 914.747.3480
Toll Free 800.832.8697
www.enablingdevices.com

Connect to your devices!

Our iPad Wireless Two Switch interacts wirelessly with your iPad, iPad Mini, iPhone or iPod Touch. The two large switches make great targets. Also, you can connect one or two of your own capability switches. The Wireless Two Switch works with any app that has been programmed for switch access. (A chart of switch accessible apps is available under free information on our website.) Works through Bluetooth 2.1 for simple pairing and has a range of over 50 feet. A lithium-ion battery recharges through your USB port or USB AC charger (not included). Also can act as one or two capability switches to activate any of your switch adapted products. *Size: 5"W x 12½"L x 1¾"H. Weight: ½ lb.*

OPERATION:

Setup & Paring:

1. Follow the included original manufactures instructions for turning your Bluetooth-equipped iPad, iPhone, iPod Touch, MAC, PC or Android device. Example iPad Go to Settings, General and set Bluetooth to On.
2. Turn On the iPad Wireless Two switch by pressing the red power button and holding for 1 second. The LED will blink 3 times and attempt to pair with your iPad, blinking once every second. Make sure the two big textured plates on the front of the switch are not depressed, doing so will prevent proper setup. **(if you have used the iPad wireless Two Switch on another device you will need to reset it in order for it to pair with your new device). Please see operation No.4 for resetting instructions.** Once paired, it will blink once every two seconds. Your host iPad may require validation to accept pairing from the iPad Wireless Two switch. If it requires a code, use 0000 (four zeros). On the iPad, under the "Devices" heading within the Bluetooth settings, you should see the iPad WirelessTwo switch appears either as a keyboard, or as "Enabling" with a serial number. Press On "Not Connected" to connect and complete the pairing process. Once connected, the iPad Wireless Two switch will blink green once every 2 seconds.

Switch Use

3. Activate the big button switches or plug in any two capability switches (if two switch activation is needed) with the standard 1/8" switch plug into Port 1-2 for single switch app use. Some switch friendly apps support two switch use so a second switch can be plugged into port 3-4. Make sure your switch or switches are plugged in all the way. There should be no gaps. Always consult your switch friendly app for proper switch setup and use.

Resetting the Bluetooth Pairing

4. To reset Bluetooth pairing on the iPad Wireless Two switch, turn the unit on. Press the red power button and hold it for 8 seconds until you see a rapid succession of red and green lights, then release. If pairing is unsuccessful, delete the device displayed on the iPad and reset the iPad Wireless Interface pairing again. Initial discovery may take up to 30 seconds. To delete the iPad Wireless Two switch from the iPad's Bluetooth Device listing, tap the blue arrow button next to Enabling's serial number and connection status text ("Connected" or "Not Connected"), then press the "Forget this Device" button. **Note:** You must reset pairing for both devices every time you change to a different device, such as using it with two different iPads.

- Turn off the iPad Wireless Two switch by pressing the red power button for 2 seconds until the LED turns red. The LED will blink red once and then shut down.

MODES

There are six modes that come ready to use on your iPad Wireless Two switch. Modes are used to send different signals to the host computer or tablet, depending on the computer or tablet and the application being used.

MODE 1: PC/MAC Turns pages for most office document and PDF software on PC/MAC computers.

MODE 2: ProTools Sample Mode for ProTools.

MODE 3: Tablet This is for most iOS and Android devices. It is the default mode of a Wireless Interface.

MODE 4: Transcription Signals used in some transcription software.

MODE 5: Multi Media For most media players. iOS cameras use the up arrow to trigger pictures and video.

MODE 6: Assisted Technology Replicates the SPACE/ENTER keys.

The following table shows each Mode and respective switch function:

MODE 1	MODE 2
1) Page Up	1) 3
2) Left Arrow	2) P
3) Page Down	3) ;
4) Right Arrow	4) Shift + R
5) Enter	5) Space
6) b	6) Ctrl + Z

MODE 3	MODE 4
1) Up Arrow	1) F9
2) Left Arrow	2) F4
3) Down Arrow	3) F7
4) Right Arrow	4) Ctrl + Shift + T
5) Enter	5) F8
6) b	6) F3

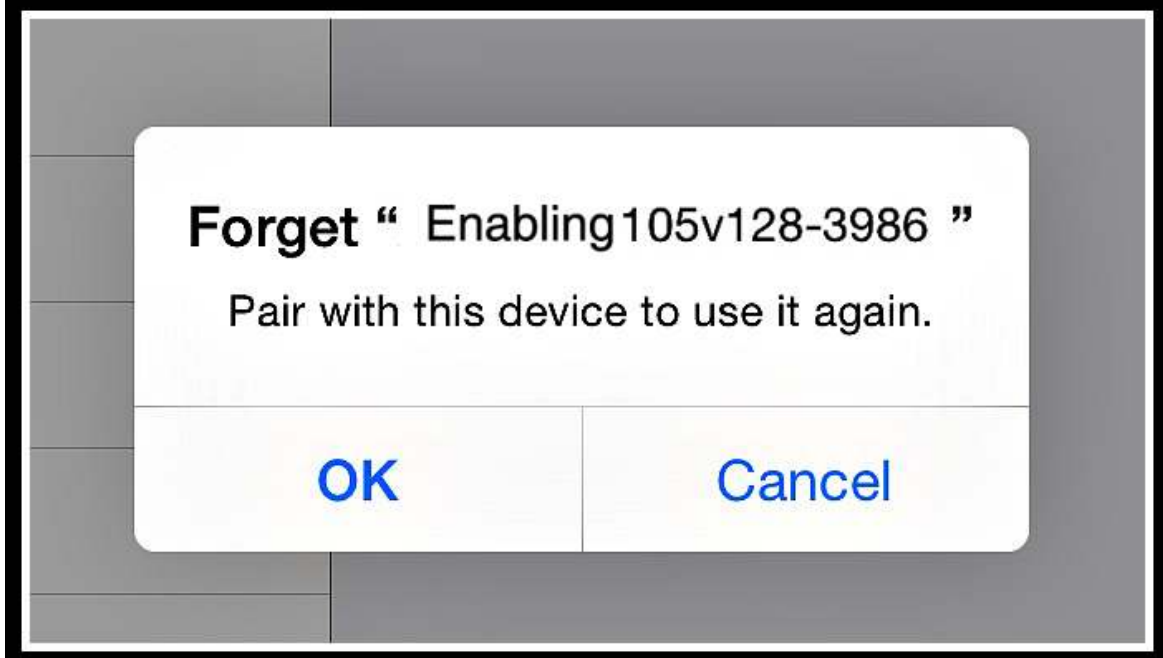
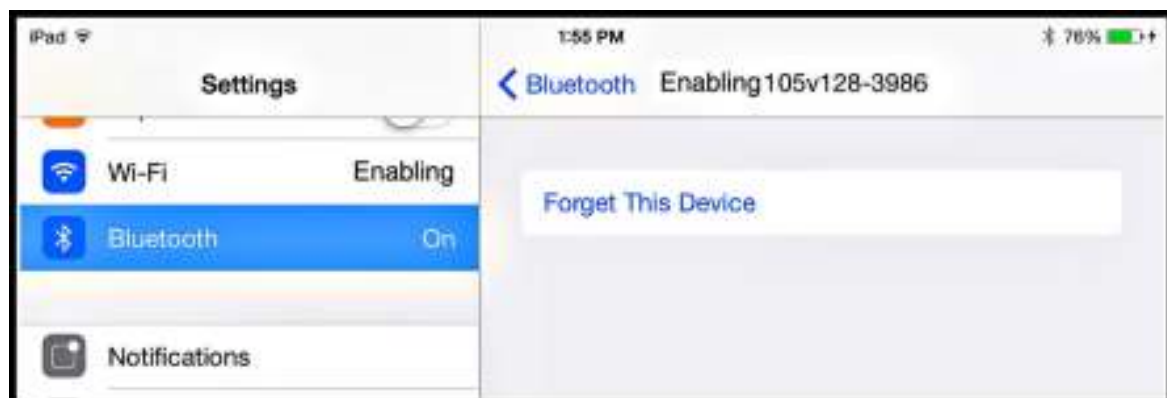
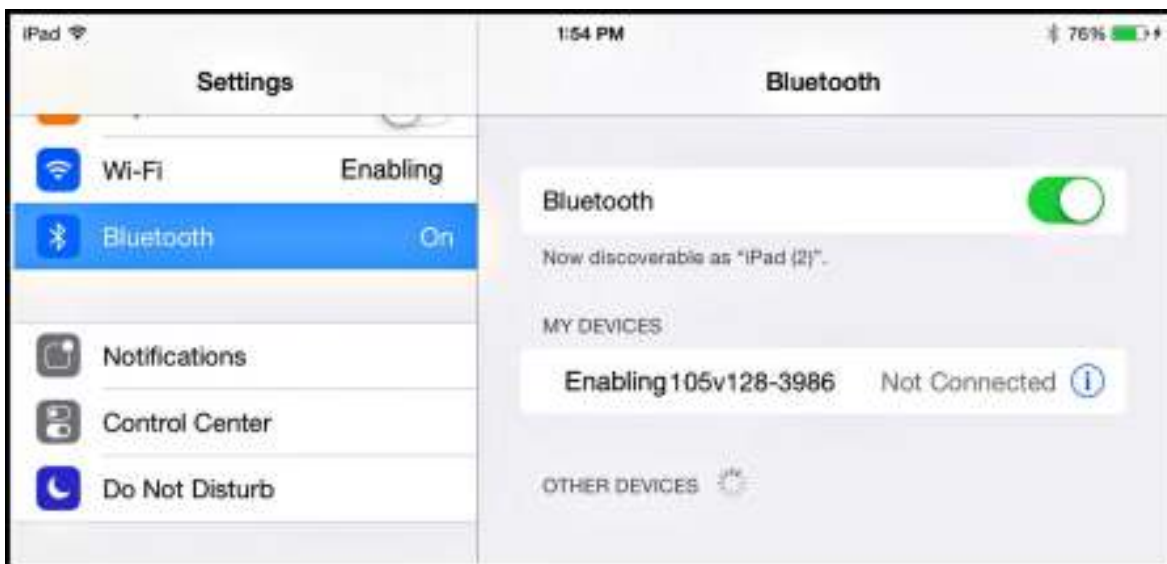
MODE 5	MODE 6
1) Volume Up/Camera	1) Space
2) Previous Song	2) 1
3) Volume Down	3) Enter
4) Next Song	4) 2
5) Play/Pause	5) Home (iPad)
6) Home (iPad)	6) Virtual Keyboard

CHANGING THE MODE: 1. Turn on the iPad Wireless Two switch 2. Press and hold the MODE button for 2 seconds. The red LED will flash once per second from 1 to 6 flashes. The number of flashes corresponds to the same MODE number. Be sure to count the flashes. 3. Release the MODE button following the number of flashes that reflects the desired MODE. The orange LED will flash the number of times indicating which MODE has been set. Example: To set MODE 2 hold the MODE button for 2 flashes of the red LED, release and the orange LED will flash 2 times to confirm the MODE 2 setting. Note: Once the MODE has been set, it will remain the same until it is changed following the above steps. **KEY REPEAT FUNCTION** To turn on the Key Repeat function, hold down buttons 2 and 4 together. Once you have turned it on, holding down a pedal or button, (except button 6) in any MODE for more than two seconds will repeat the key action twice per second until released. Variances may occur in the repeat timing due to environmental factors.

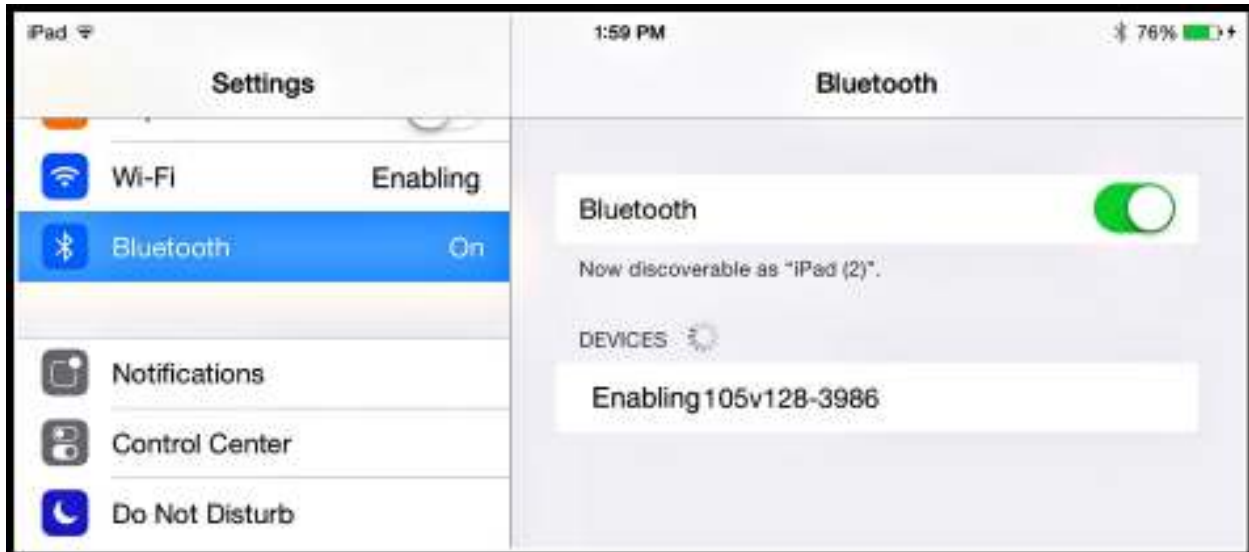
Charging:

Important: Please charge your iPad Wireless Two switch before using it the first time. Use the enclosed USB cable with a wall power adapter (Not Included), or connect it to your USB port on your computer. A full charge will need approximately 2 hours with a wall adapter and 6 hours through a computer. Your iPad Wireless Two switch should last 80-100 hours on a full charge depending on how much you use it. On a full charge, the LED will blink green. When the power is low, the LED will blink as follows: **Yellow** every second = under 25% power **Red** every second = under 10% power Charge your unit through the mini USB port with the cable provided, attaching the other end to any powered USB port on a computer or with a USB wall charger. Depending on the source of power, it will take 1-6 hours for a complete charge. Note that if the iPad Wireless Two switch is turned off while charging, the LED indicator will not light up. If you leave the iPad Wireless switch on while it is charging, the LED will remain lit and you can monitor the charging status. **Red** is a low charge, **yellow** is 75% charge and **orange/green** is a full charge. Note, that the unit will still charge while turned off. **Note: If you fail to charge your battery when it begins blinking red, you risk running it down completely which will require a factory replacement.**

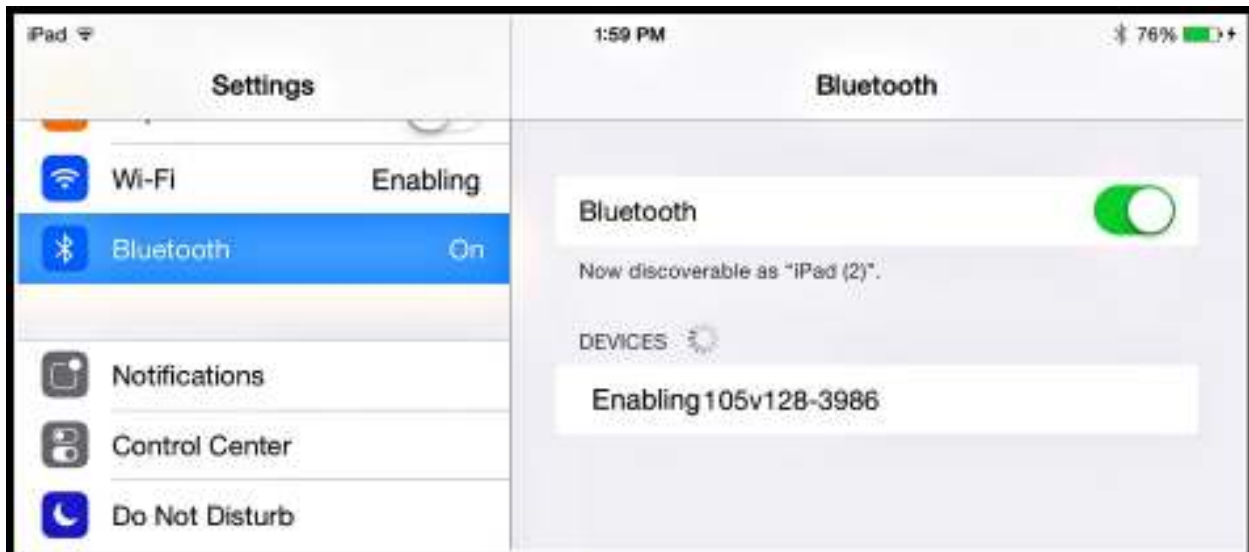
1. Turn off the iPad Wireless Two switch.
2. On the device, go to the Bluetooth settings (Settings, General, Bluetooth). Tap the Wireless Interface serial number in the Bluetooth list. Tap the "i" in the blue box to the right, then tap Forget this Device and then Okay. (If the iPad Wireless Two switch serial number is not showing, skip this step)



3. Turn off Bluetooth on the device.
4. Turn the iPad Wireless Two switch on. When blinking green every second, press and hold the power button for 6-8 seconds or until you see it blink red/green/red/green very quickly. If the Wireless Interface turned off, turn it back on.
5. Turn on Bluetooth on the device.
6. The iPad Wireless switch should appear after 5-10 seconds depending on the model.



7. Tap on top of the serial number when it appears and it will connect in a few seconds.



Android Tablet Setup:

Here is a step by step walkthrough on how to pair the Wireless Switch with a Bluetooth-equipped Android tablet.

1. Go to Settings and turn Bluetooth off.
2. Turn your Switch Interface On. When it is blinking green every second, press and hold the ON/OFF switch for 6-8 seconds, or until the LED light blinks red/green/red/green very quickly. Let go. If the light turned off, turn it back on again.
3. Turn the Bluetooth settings ON on the Android.
4. Tap the "Visible" box so that a check mark appears.
5. Tap Scan for Devices in the upper right corner.
6. The Wireless Switch Interface serial number will show in the Bluetooth list starting with the word Enabling. Tap and it will Pair.
7. Once paired, tap the Wireless Switch Interface serial number again to begin the Connecting process. It will ask you to type a series of letters/numbers. Click Next or Continue.
8. Once Connected go to your App to make sure you are able to activate page turns (if not, you may need to change the Mode)

Note: Some Android tablets do not have the ability to connect to external Bluetooth keyboards. The Wireless Switch Interface needs Bluetooth HID compatibility in order to work. Make sure you have the newest operating system installed. Contact the manufacturer if you are not able to connect your Switch Interface to your tablet.

Standard Switch Use:

The iPad Wireless Two switch can also be used as a standard capability switch for other switch enabled products. Plugging the included 1/8" to 1/8" switch cord into port 1-2 on the iPad Wireless switch will allow you to use it as a standard capability switch for switch adapted devices.

Troubleshooting

Nothing happens when the power button is pressed. Make sure your iPad Wireless Two switch has been charged for at least one hour. The power light comes on and an orange light blinks when a connected switch is pressed, but nothing happens on my iPad. First, make sure your iPad Wireless Two switch is properly paired with your iPad (see "Setup and Pairing"). Reset the iPad Wireless Two switch pairing by turning the unit on, then holding the power button for 8 seconds until you see a rapid succession of red and green lights. If your iPad Wireless Two switch is properly powered and paired to your iPad, but nothing happens when you press a connected switch, first be sure that you are working with a compatible app. Be sure to check the compatible apps setup for specific additional instructions to enable iPad Wireless Two switch usage.

Make sure the switch or switches you are using are working with other devices to rule them out as the source of the problem.

Care of the Unit:

The iPad Wireless Two switch can be wiped clean with any household multi-purpose, non-abrasive cleaner and disinfectant.

Do not use abrasive cleaners, as they will scratch the surface of the unit.

Do not submerge the unit, as it will damage the electrical components.

IPad™ is a trademark of Apple, Inc.

Android™ is a trademark of Google, Inc.



For Technical Support:

Call our Technical Service Department
Monday through Friday, 9 a.m. to 5 p.m. (EST)
1-800-832-8697
customer_support@enablingdevices.com

Rev: 2/22/17