

---

---

## Single Switch Mouse #7753

---

---

### USER'S GUIDE

---

**For Technical Support:**

Call our Technical Service Department  
Monday through Friday, 9 a.m. to 5 p.m. (EST)  
1-800-TEC-TOYS or 1-800-832-8697  
customer\_support@enablingdevices.com

---



**Enabling Devices**

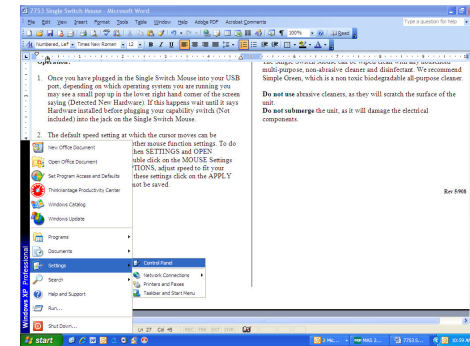
385 Warburton Avenue  
Hastings-on-Hudson, NY 10706  
Tel. 914.478.0960 / Fax 914.478.7030  
[www.enablingdevices.com](http://www.enablingdevices.com)

We've made it easy for you to operate your computer cursor with a capability switch (Not included). Plug the Single Switch Mouse into your computer and attach any capability switch. Push and hold the switch for a ½ of a second and release it and the cursor will go up, hit it again to stop. Repeat these steps to move the cursor right, then down, then left. When you get to your destination, activate the switch twice and you will open the window. PC Compatible Only. Requires USB port, Windows 98 or higher. Size: 4 1/2"L x 2 1/2"W x 1"H.

### Operation:

1. Once you have plugged in the Single Switch Mouse into your USB port, depending on which operating system you are running you may see a small pop up in the lower right hand corner of the screen saying (Detected New Hardware). If this happens wait until it says Hardware installed before plugging your capability switch (Not included) into the jack on the Single Switch Mouse.
2. Connect any external capability switch via the 1/8" jacks. If you need to use a ¼ " to 1/8" adapter for your switch, it must be a mono adapter, not stereo. Make sure that the connections between the external capability switch and the adapter (if applicable) and the jack are tight, there should be no gaps.
3. To activate and hold your switch between ½ to 1 second, then release. The cursor will start to move upward slowly then increases speed, activate your switch again to stop the cursor. If you activate your switch and then hold as before when you release your switch the cursor will now move to the Right. If you repeat this again it will move Down. One more time it will move to the Left. The control works in a clockwise direction. When you reach your target a double click will open the target.

4. The default speed setting at which the cursor moves can be changed if needed as well as other mouse function settings. To do this go to the Windows START Menu, then SETTINGS then open "CONTROL PANEL". Next double click on the MOUSE Settings and then select POINTER OPTIONS, adjust speed to fit your needs. When finished to save these settings click on the APPLY button. If not the change will not take effect or be saved.



### Troubleshooting:

**Problem:** The mouse fails to operate, or operates incorrectly.

**Action #1:** Shutdown your computer before plugging in the Single Switch Mouse.

**Action #2:** Make sure that you have your mouse plugged in to your computer properly, and your capability switch is plugged into the mouse all the way, there should be no gaps in the connection.

### Care of the Unit:

The Single Switch Mouse can be wiped clean with any household multi-purpose, non-abrasive cleaner and disinfectant. We recommend Simple Green, which is a non toxic biodegradable all-purpose cleaner.

**Do not use** abrasive cleaners, as they will scratch the surface of the unit.

**Do not submerge** the unit, as it will damage the electrical components.